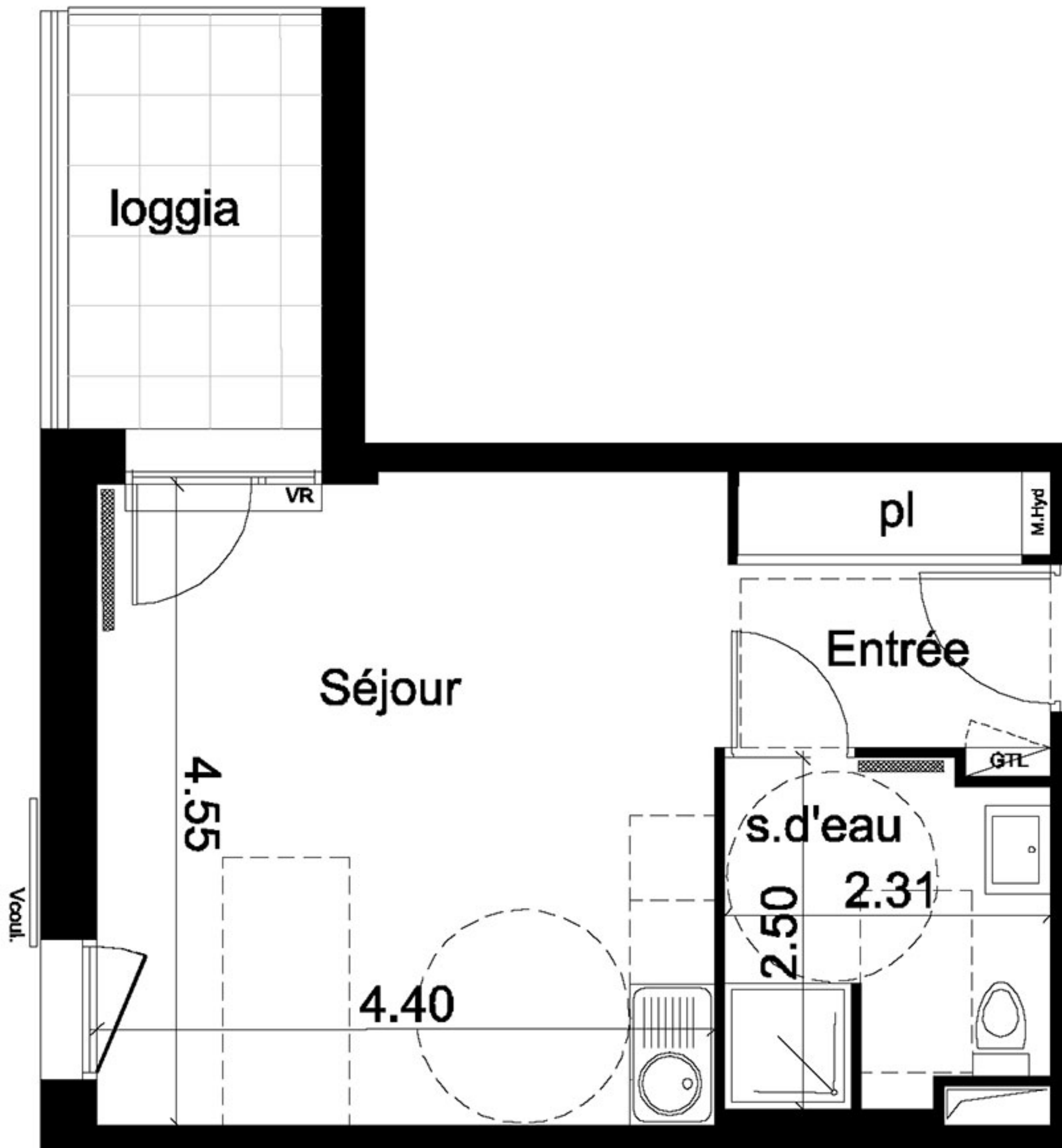
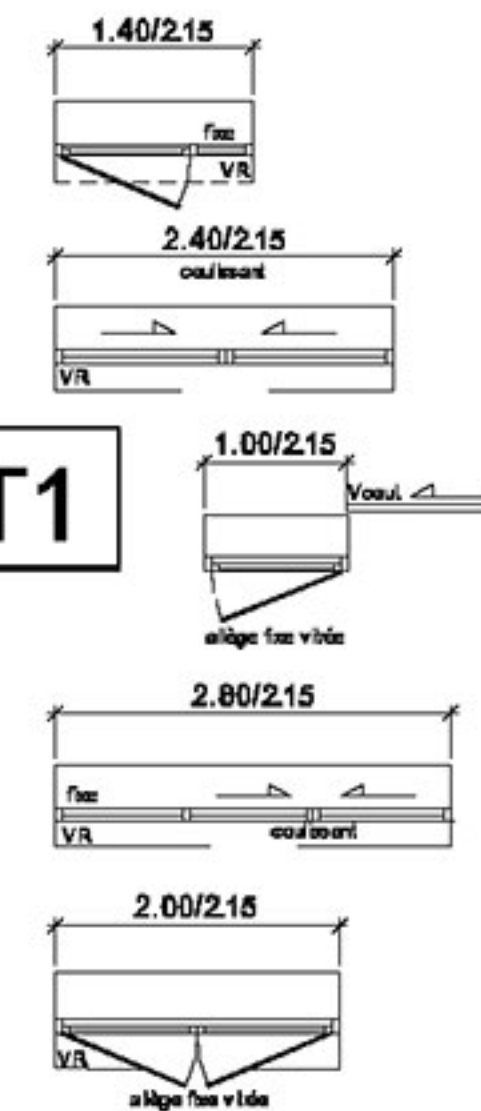


Entrée	4.47	m <sup>2</sup>
Séjour	20.42	m <sup>2</sup>
s.d'eau	5.36	m <sup>2</sup>
<b>Total</b>	<b>30.25</b>	<b>m<sup>2</sup></b>

Annexes	Surfaces	
Loggia	5.75	m <sup>2</sup>



**48-T1**



M.Hyd : Modul Hydraulique  
GTL: gaine technique de logement.  
VR: volet roulant  
Vcoul.: volet coulissant  
[hatched symbol] : radiateur