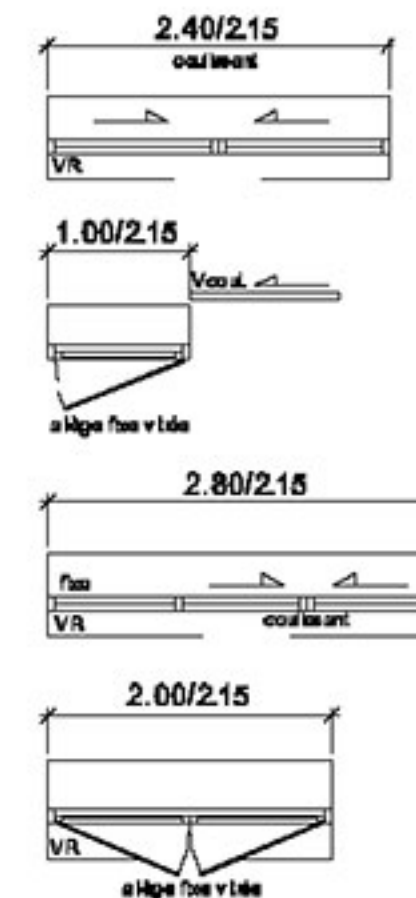
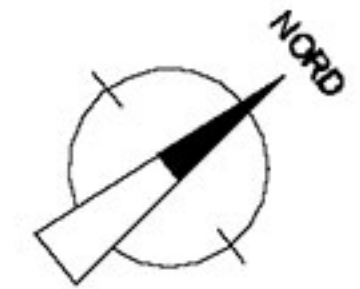
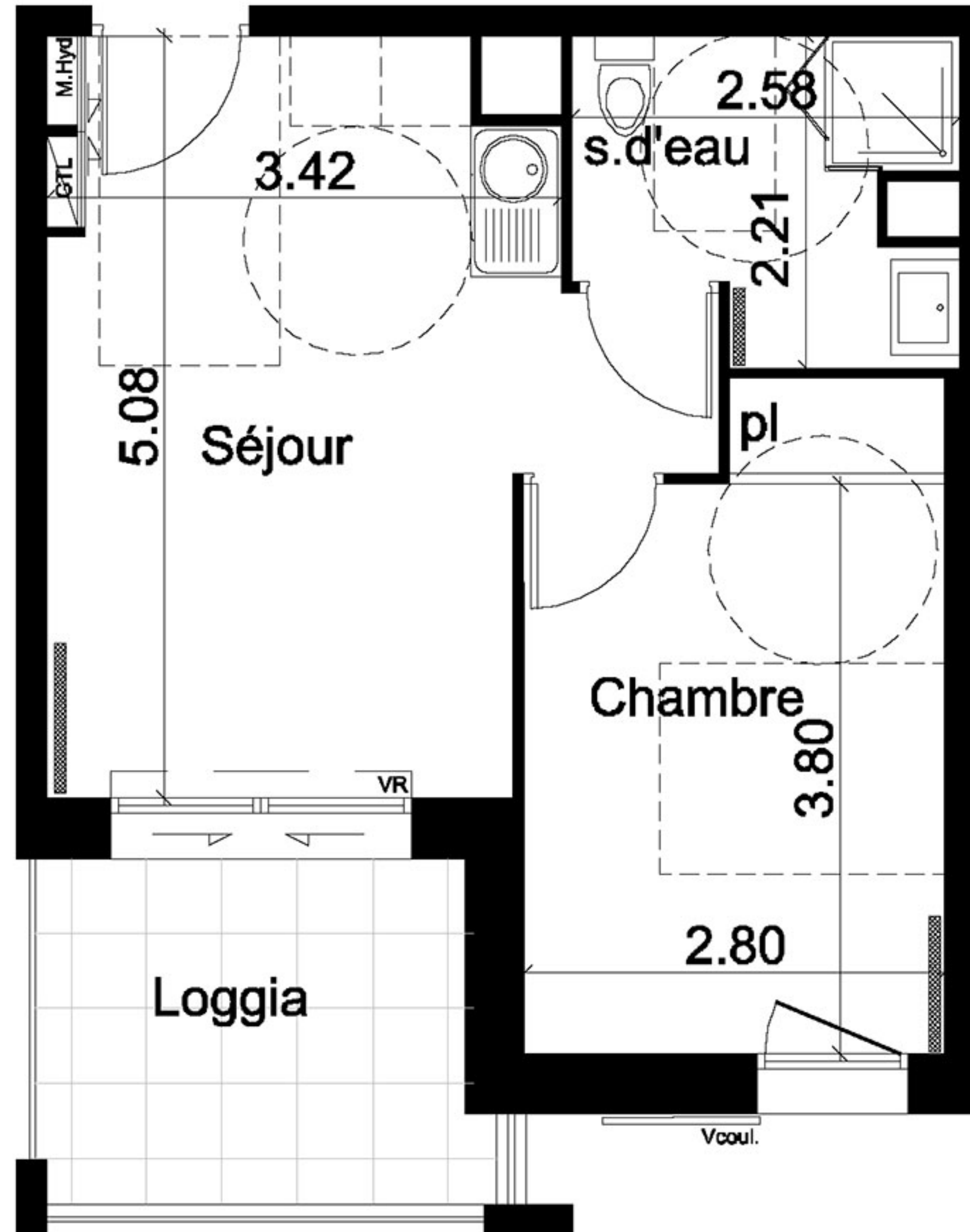


Séjour	17.30	m ²
s.d'eau	4.83	m ²
Chambre	11.62	m ²
Total	33.75	m²

Annexes	Surfaces	
Loggia	7.30	m ²



42-T2



M.Hyd : Modul Hydraulique
GTL: gaine technique de logement.
VR: volet roulant
Vcoul.: volet coulissant
▨ : radiateur