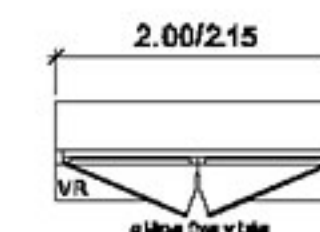
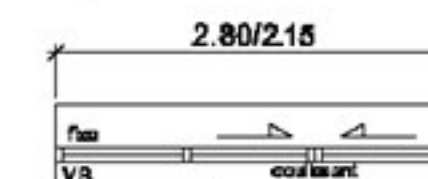
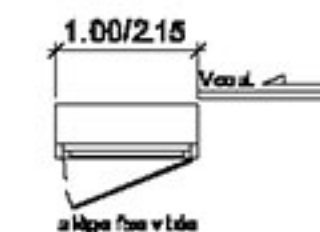
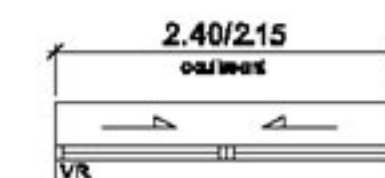
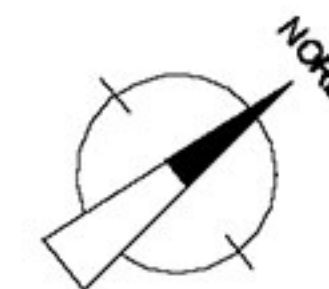
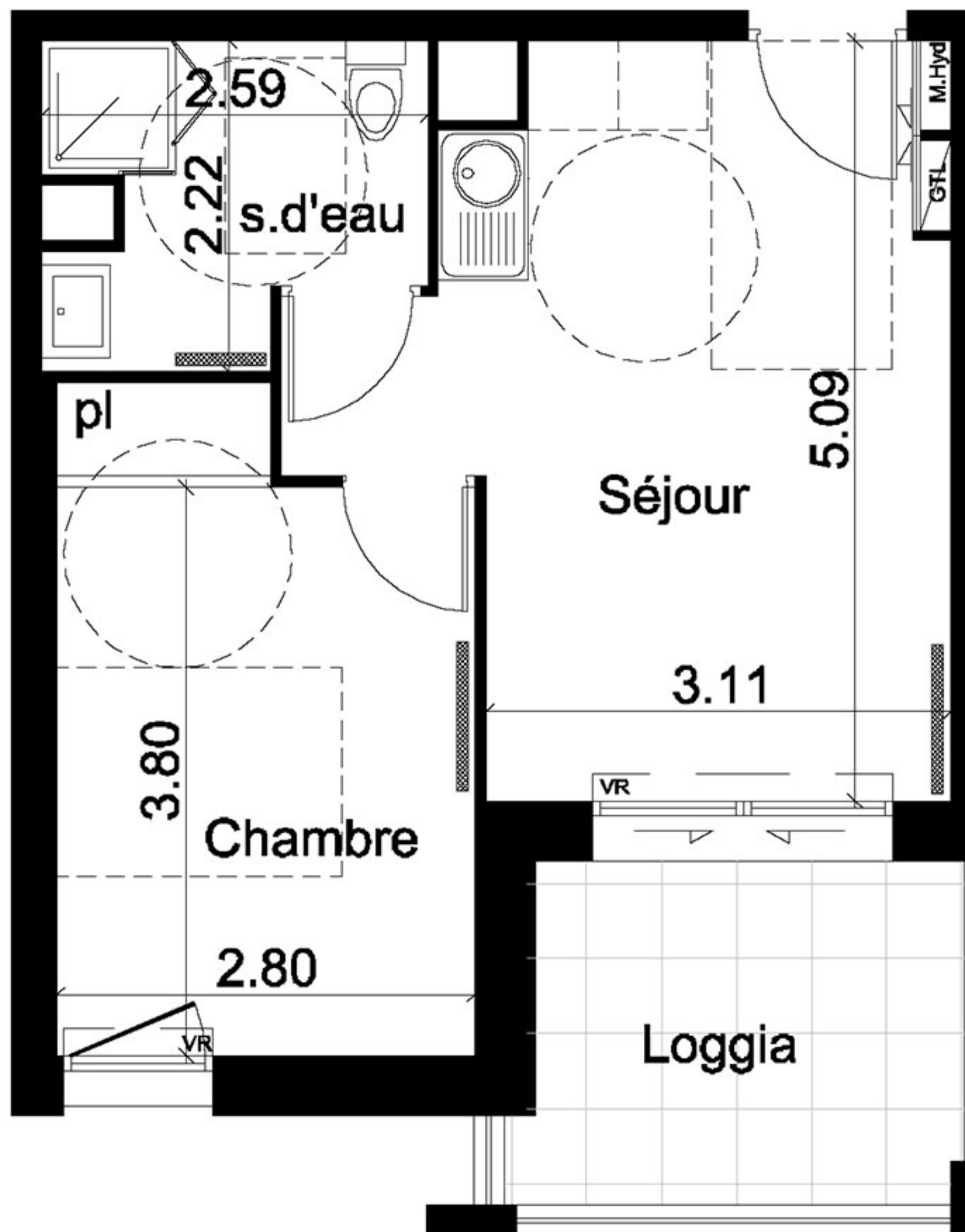


Séjour	17.38	m ²
s.d'eau	4.83	m ²
Chambre	11.65	m ²
Total	33.86	m²

Annexes	Surfaces	
Loggia	7.22	m ²



- M.Hyd : Modul Hydraulique
- GTL: gaine technique de logement.
- VR: volet roulant
- Vcoul.: volet coulissant
- : radiateur