

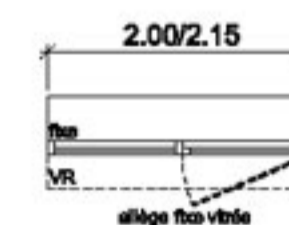
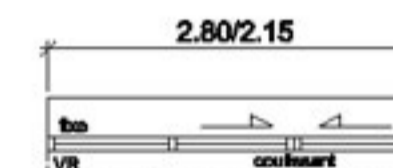
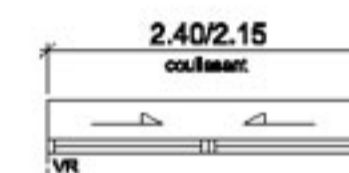
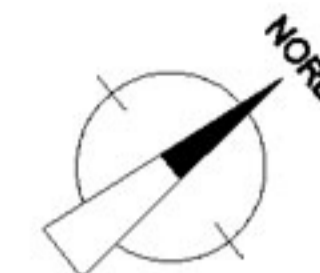
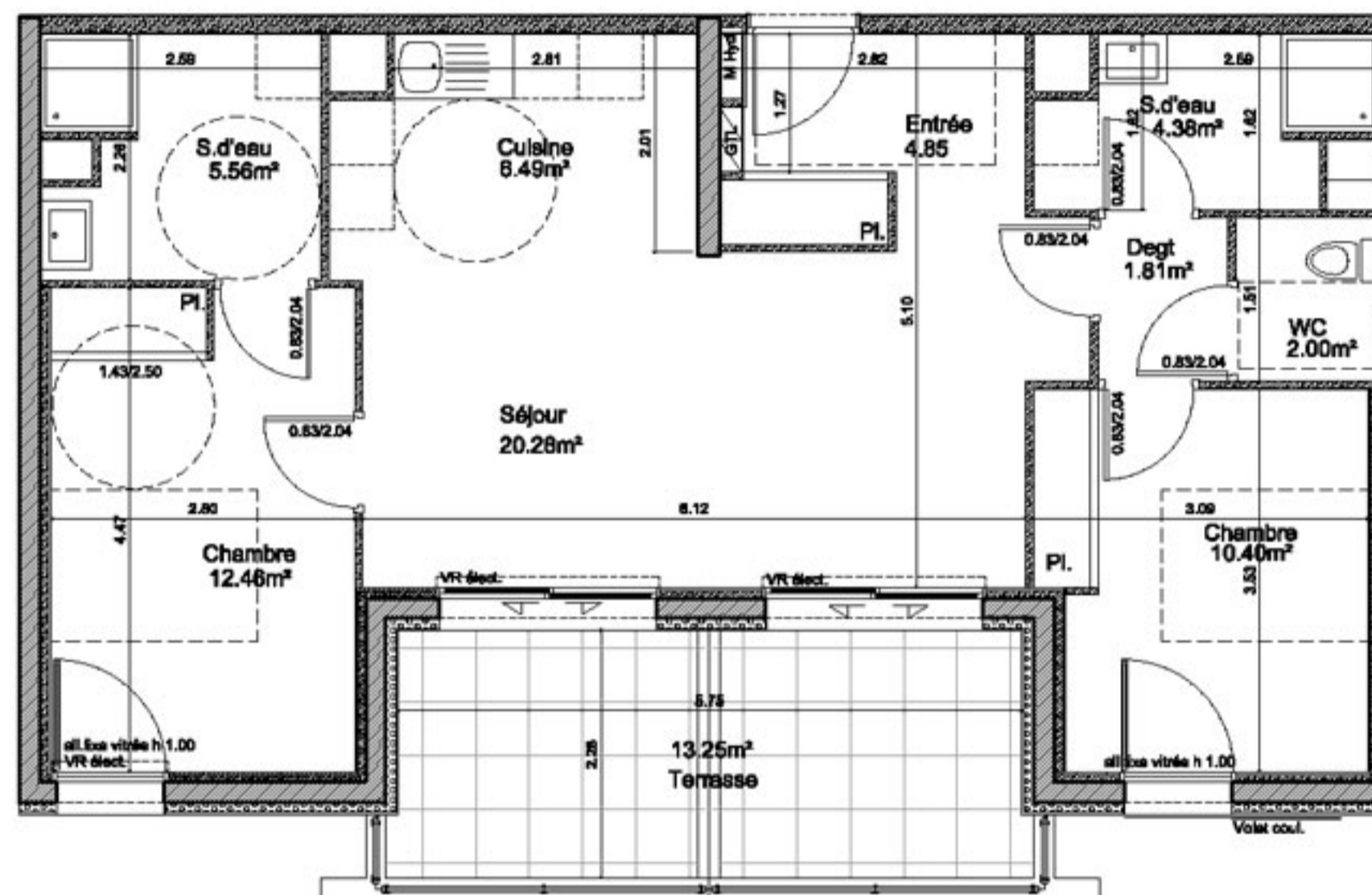
Séjour	20.28	m ²
entrée	4.85	m ²
cuisine	6.49	m ²
degt	1.81	m ²
wc	2.00	m ²
s.d'eau	4.38	m ²
chambre	10.40	m ²
s.d'eau	5.56	m ²
chambre	12.46	m ²

Total 68.23 m²

Annexes	Surfaces
terrasse	13.25 m ²



59b T3



M.Hyd : Modul Hydraulique
GTL: gaine technique de logement.
VR: volet roulant
Vcoul.: volet coulissant
▨ : radiateur