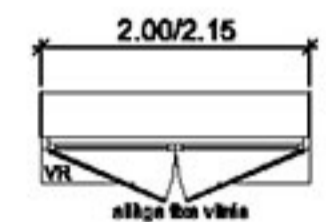
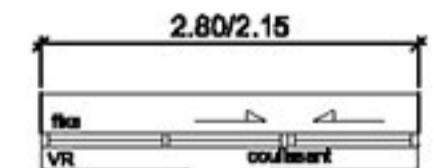
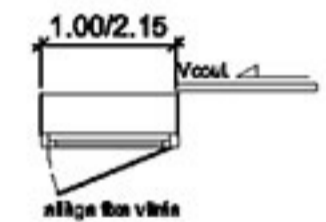
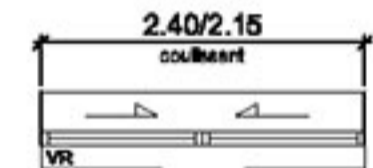
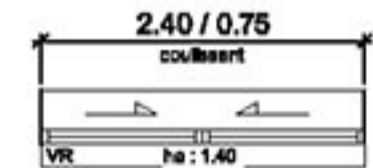
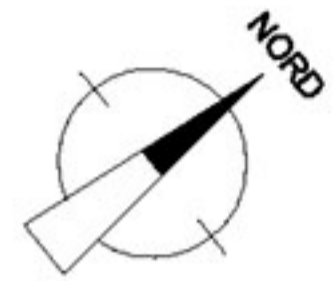
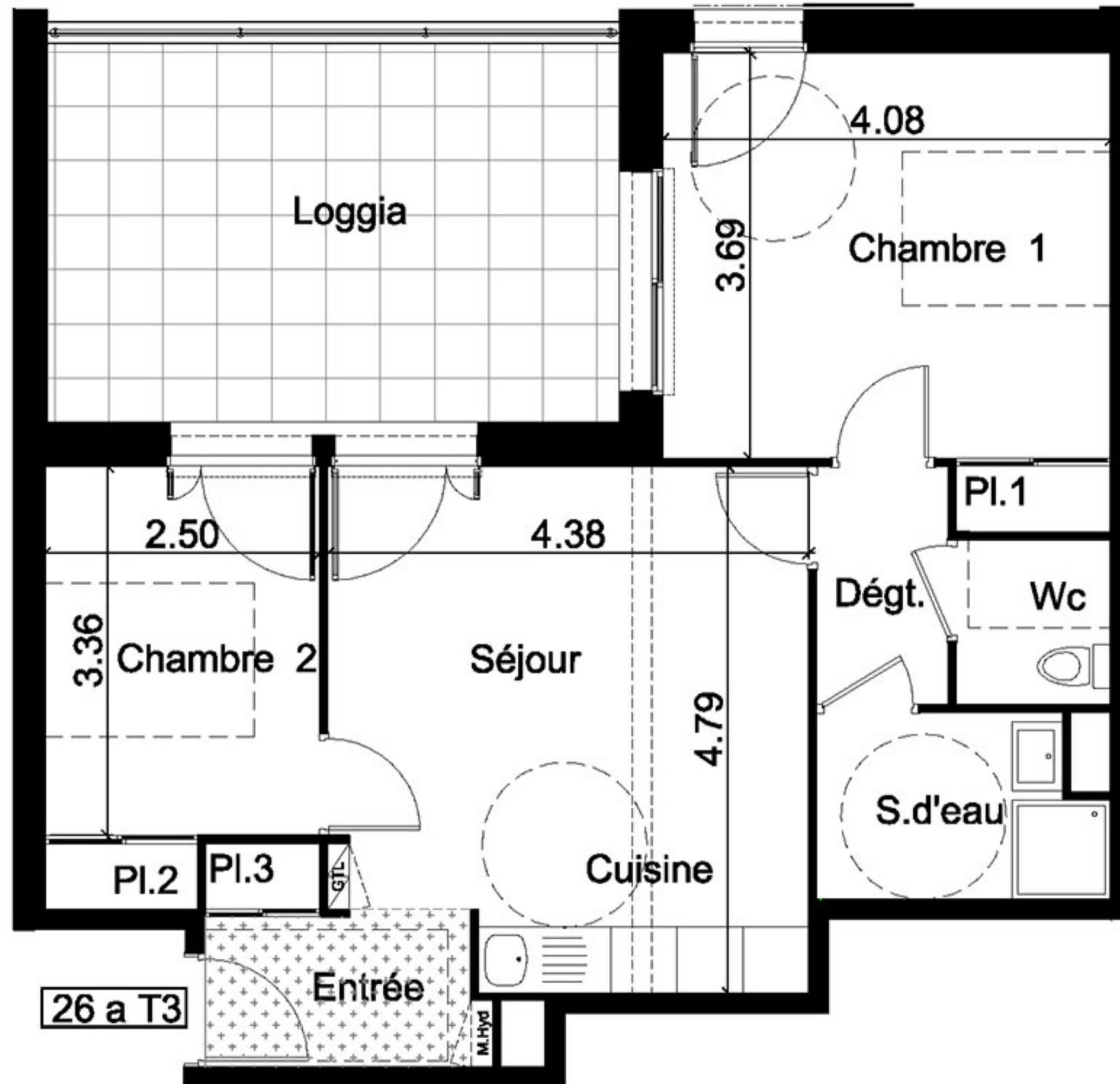


Entrée	4.05	m <sup>2</sup>
Séjour.cuisine	19.79	m <sup>2</sup>
S d'eau 1	6.32	m <sup>2</sup>
Wc	2.11	m <sup>2</sup>
Chambre 1	15.99	m <sup>2</sup>
Chambre 2	9.33	m <sup>2</sup>
Dégt.	2.60	m <sup>2</sup>

Total 58.07 m<sup>2</sup>

Annexes	Surfaces
Loggia 1	19.72 m <sup>2</sup>



M.Hyd : Modul Hydraulique  
GTL: gaine technique de logement.  
VR: volet roulant  
Vcoul.: volet coulissant  
☒ : radiateur