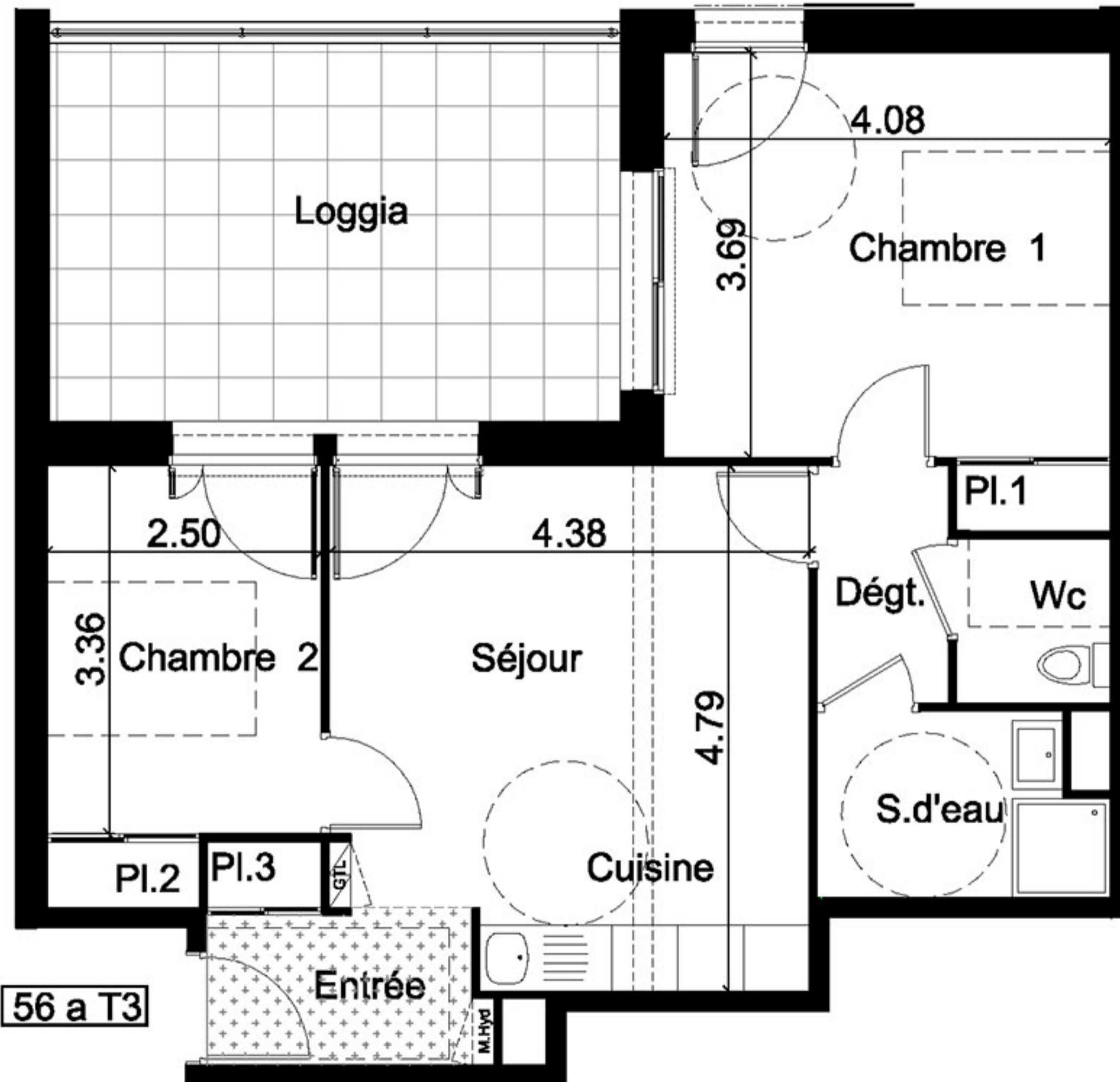


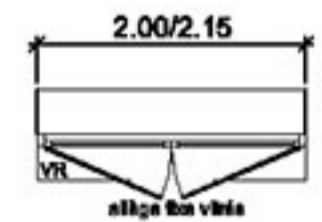
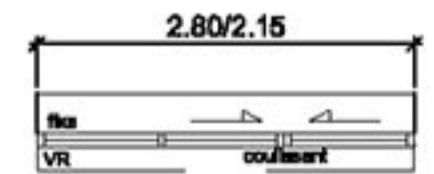
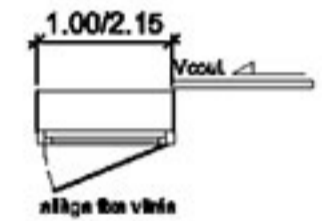
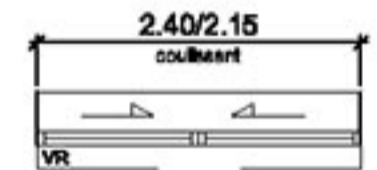
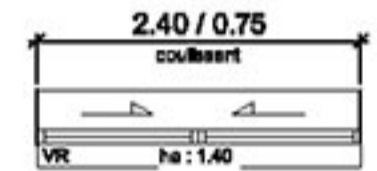
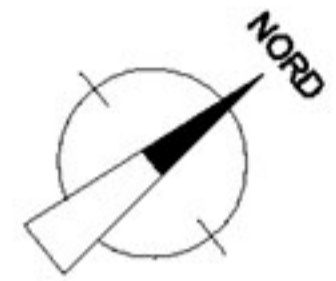
Entrée	4.05	m ²
Séjour.cuisine	19.79	m ²
S d'eau 1	6.32	m ²
Wc	2.11	m ²
Chambre 1	15.99	m ²
Chambre 2	9.33	m ²
Dégt.	2.60	m ²

Total 58.07 m²

Annexes	Surfaces
Loggia 1	19.72 m ²



56 a T3



M.Hyd : Modul Hydraulique
GTL: gaine technique de logement.
VR: volet roulant
Vcoul.: volet coulissant
☒ : radiateur