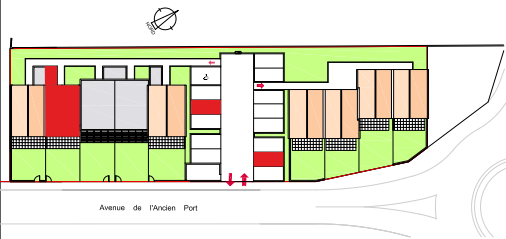


Les Myrtils

ILOT D
D4

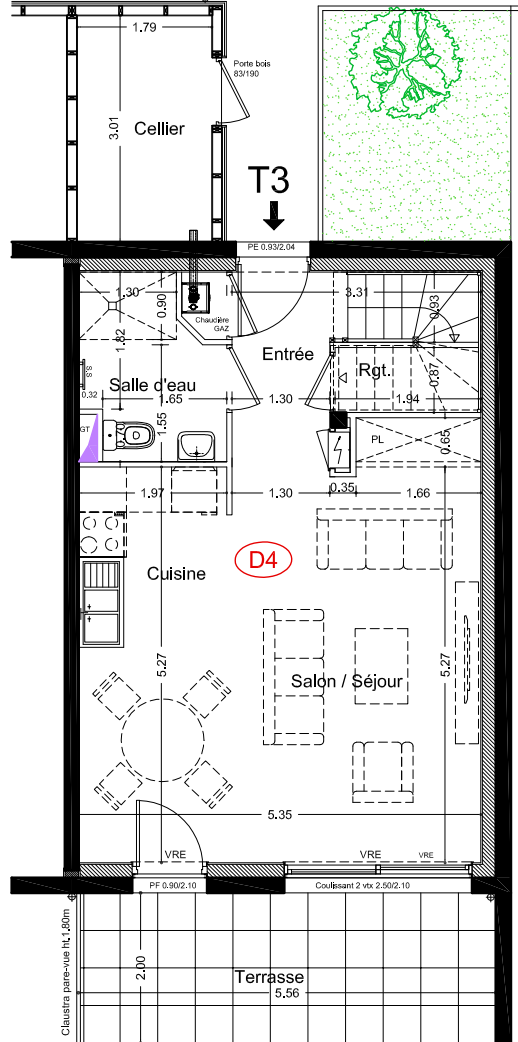
ZAC DU CORMIER - ILOT D
Avenue de l'Ancien Port 17640 Vaux sur Mer
17640 Vaux sur Mer



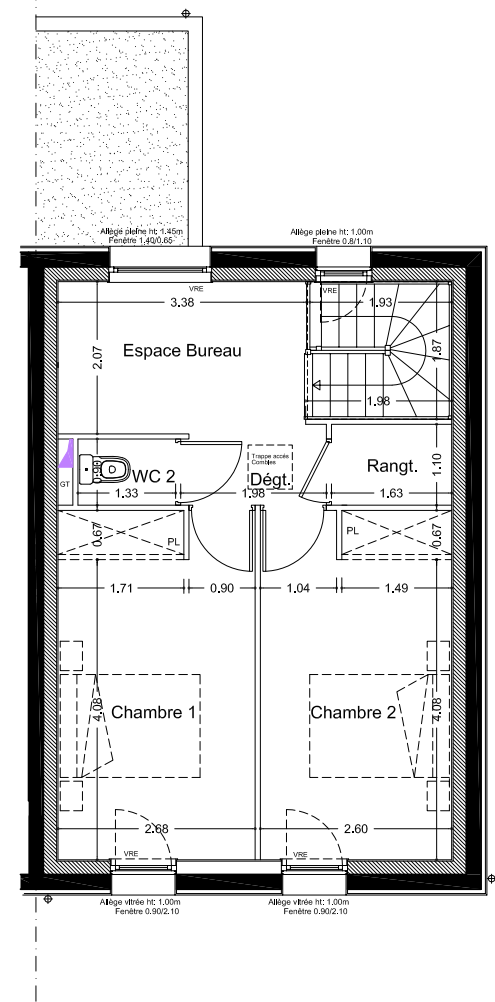
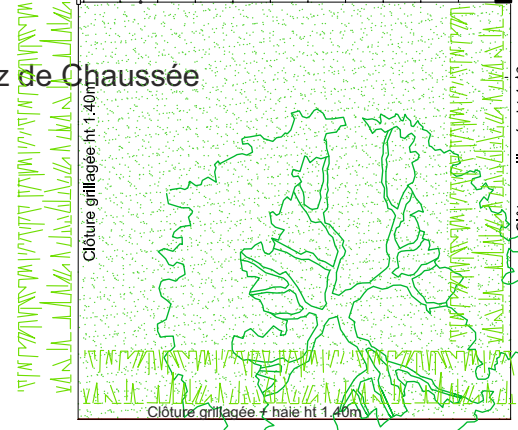
Maison D4 T3 R+1

SURFACES HABITABLES	
<i>Rez de Chaussée</i>	
Entrée	4.31 m ²
Séjour - Salon	24.15 m ²
Cuisine	4.85 m ²
Salle d'eau/WC	4.16 m ²
Rangt.	0.87 m ²
<i>1er Etage</i>	
Chambre 1	12.68 m ²
Chambre 2	12.31 m ²
Espace bureau	6.88 m ²
WC	1.20 m ²
Dégt.	2.05 m ²
Rangt.	1.80 m ²
TOTAL	75.26 m²
SURFACES EXTÉRIEURES	
Terrasses	11.11 m ²
Jardin	40.05 m ²
TOTAL	51.16 m²
Parcelle	114.00 m ²

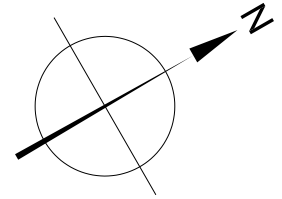
SCCV SEMDEN 1
35 rue du Dr Daniel Planet 17000 La Rochelle
Tél. : 05 46 448 448
www.eden-promotion.fr



Plan Rez de Chaussée



Plan 1er Etage

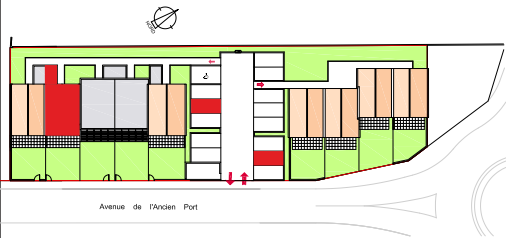


Les Myrtils

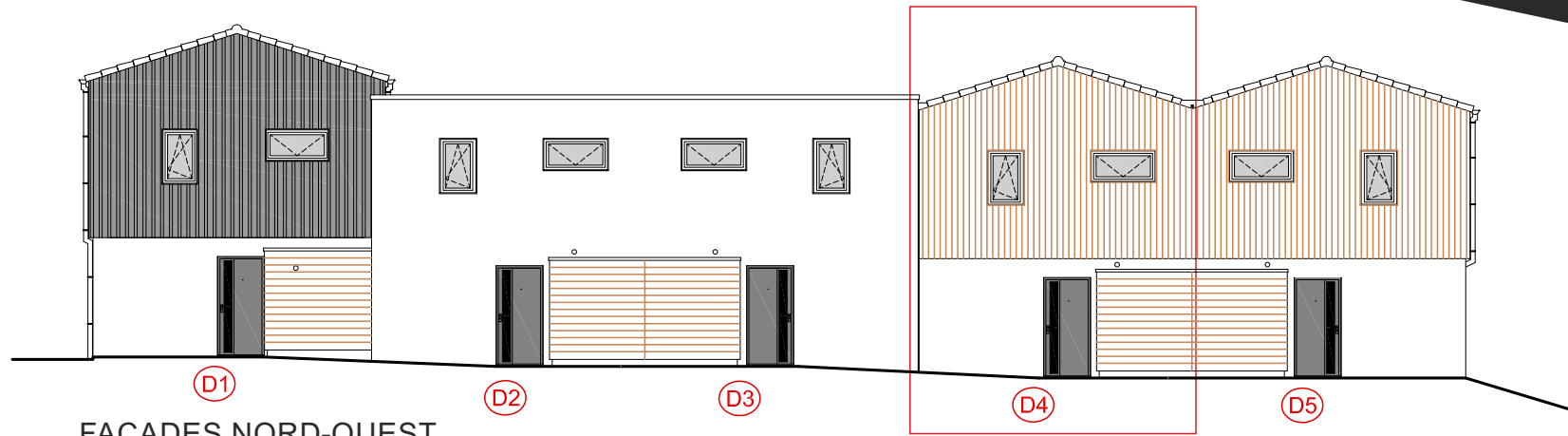
ILOT D
D4

ZAC DU CORMIER - ILOT D

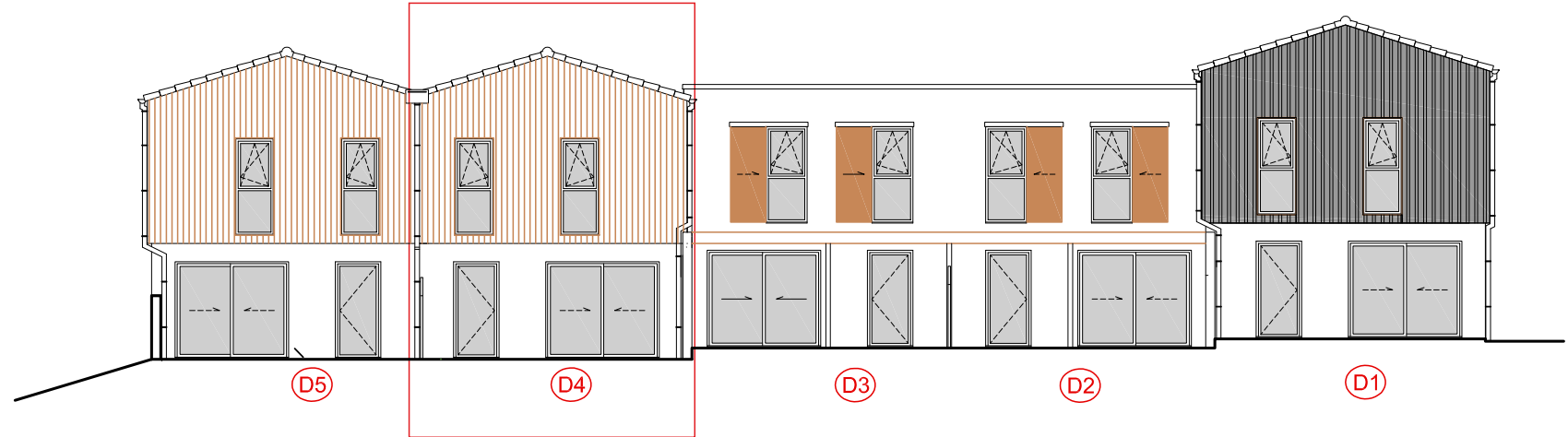
Avenue de l'Ancien Port 17640 Vaux sur Mer
17640 Vaux sur Mer



Maison D4 T3 R+1



FACADES NORD-OUEST



FACADES SUD-EST



SCCV SEMDEN 1
35 rue du Dr Daniel Planet 17000 La Rochelle
Tél. : 05 46 448 448
www.eden-promotion.fr

semdas