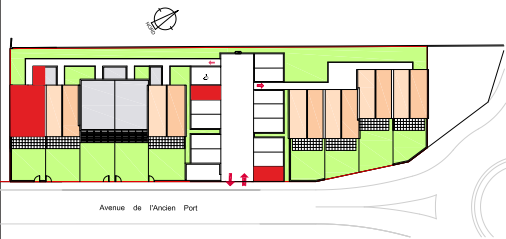


Les Myrtils

ILOT D
D5

ZAC DU CORMIER - ILOT D

Avenue de l'Ancien Port 17640 Vaux sur Mer
17640 Vaux sur Mer



Maison D5 T3 R+1

SURFACES HABITABLES

Rez de Chaussée

| | |
|----------------|----------------------|
| Entrée | 4.31 m ² |
| Séjour - Salon | 24.15 m ² |
| Cuisine | 4.85 m ² |
| Salle d'eau/WC | 4.16 m ² |
| Rangt. | 0.87 m ² |

1er Etage

| | |
|---------------|----------------------|
| Chambre 1 | 12.68 m ² |
| Chambre 2 | 12.31 m ² |
| Espace bureau | 6.88 m ² |
| WC | 1.20 m ² |
| Dégt. | 2.05 m ² |
| Rangt. | 1.80 m ² |

TOTAL 75.26 m²

Cellier 5.38 m²

SURFACES EXTÉRIEURES

| | |
|-----------|----------------------|
| Terrasses | 11.41 m ² |
| Jardin | 38.82 m ² |

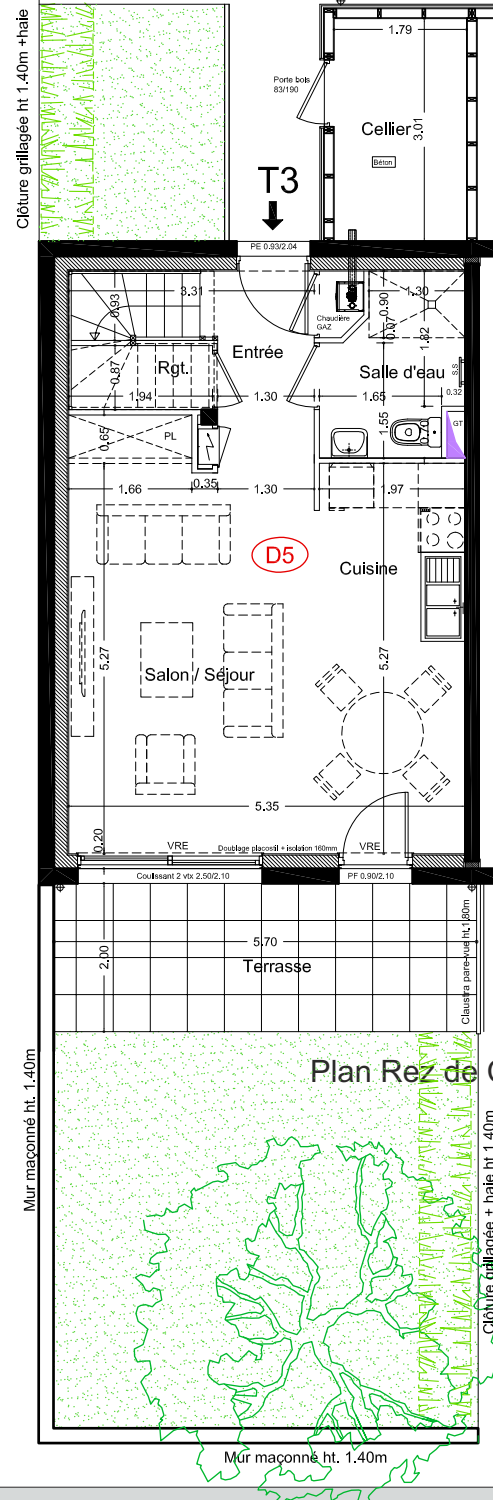
TOTAL 40.23 m²

Parcelle 113.00 m²

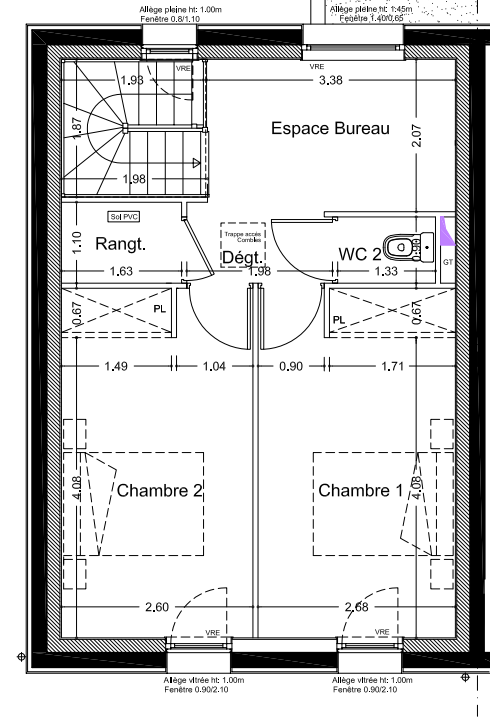


SCCV SEMDEN 1
35 rue du Dr Daniel Planet 17000 La Rochelle
Tél. : 05 46 448 448
www.eden-promotion.fr

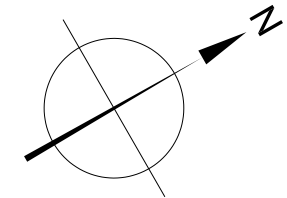
sem das



Plan Rez de Chaussée



Plan 1er Etage

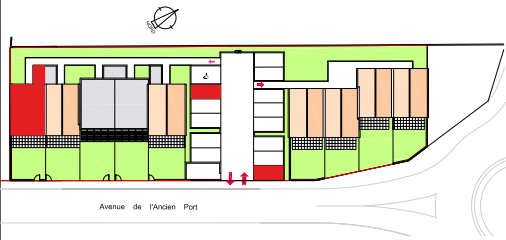


Les Myrtils

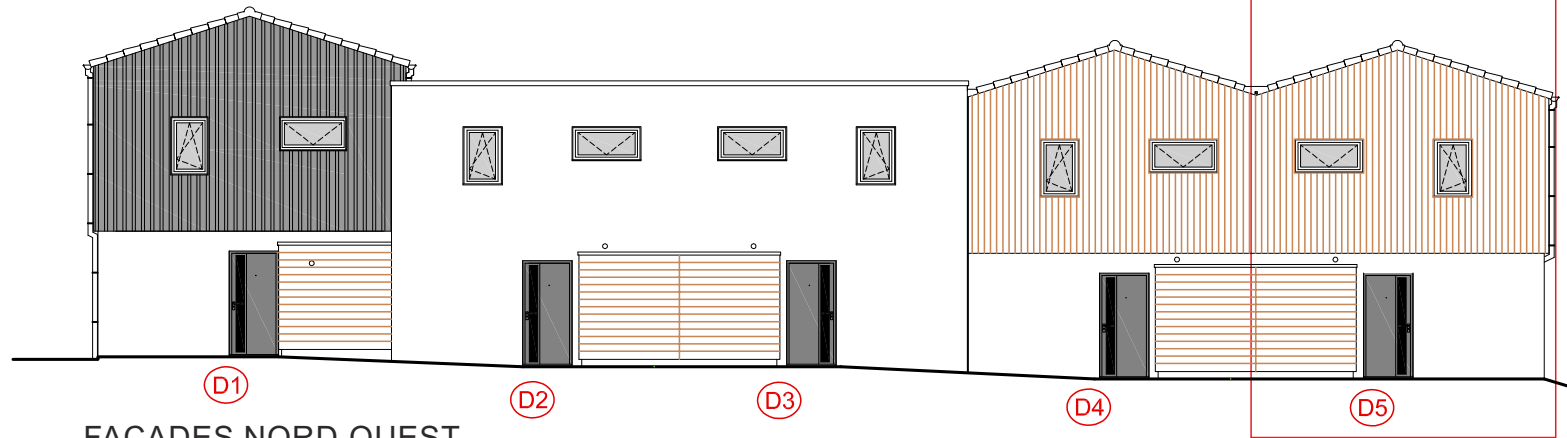
ILOT D
D5

ZAC DU CORMIER - ILOT D

Avenue de l'Ancien Port 17640 Vaux sur Mer
17640 Vaux sur Mer



Maison D5 T3 R+1



FACADES NORD-OUEST



FACADES SUD-EST



SCCV SEMDEN 1
35 rue du Dr Daniel Planet 17000 La Rochelle
Tél. : 05 46 448 448
www.eden-promotion.fr

semdas